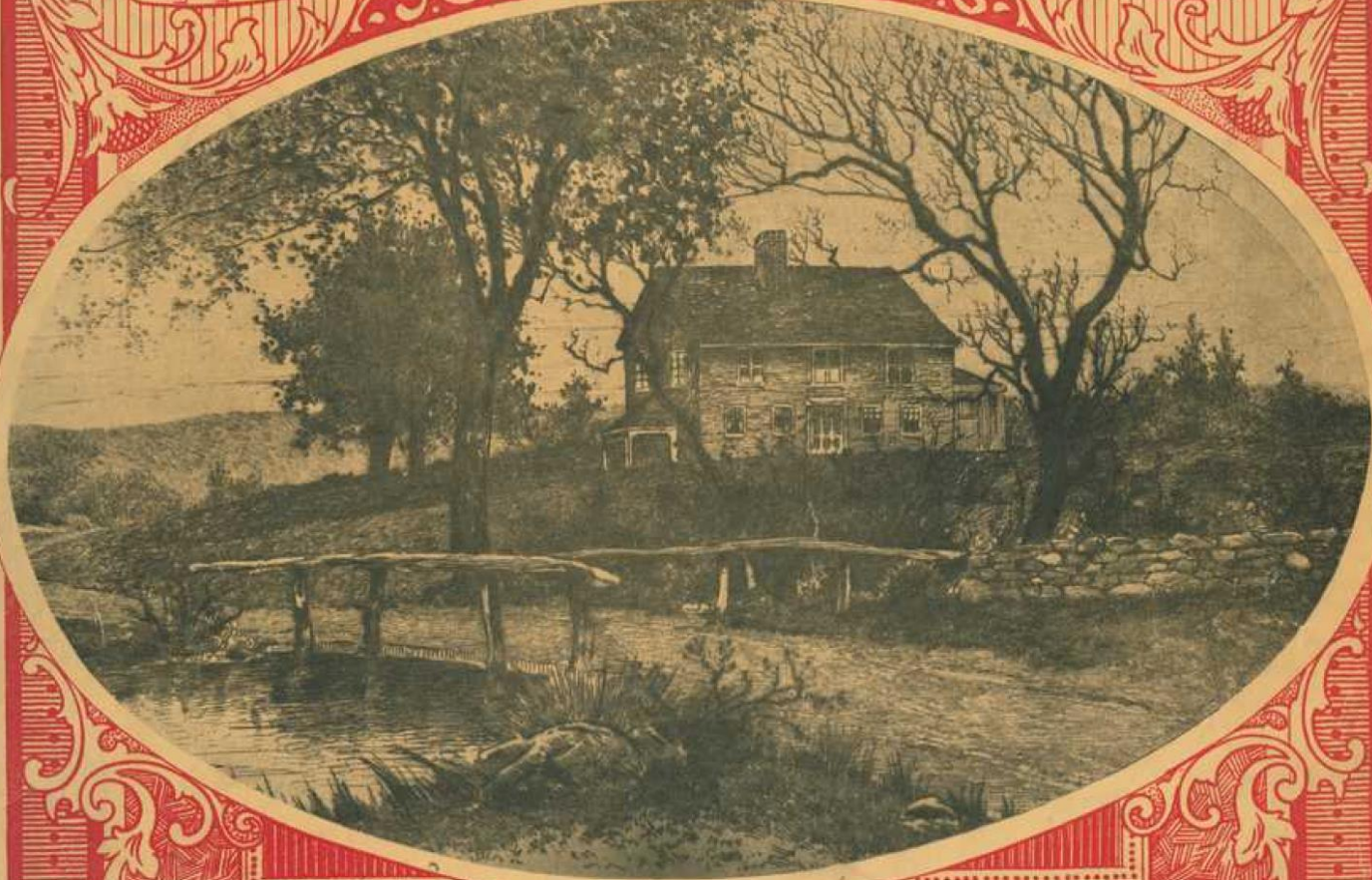


# THE OLD HOMESTEAD

WALTZES FOR PIANO



BY *BARBARA KLEINBECK*

UNION MUSIC CO.  
= CINCINNATI, OHIO. =

5



# THE OLD HOMESTEAD.

## Waltzes.

BARBARA KLEINBECK.

Intro.

The Intro consists of two staves of music in 3/4 time, key of B-flat major. The right hand features a melodic line with a trill on the first measure and a slur over the next two. The left hand provides a simple harmonic accompaniment with chords and single notes.

Valse tempo moderato.

The first system of the waltz begins with a mezzo-forte (mf) dynamic. It features a steady bass line in the left hand and a more active melodic line in the right hand, including a trill and a slur.

The second system continues the waltz with similar melodic and harmonic patterns, including a trill and a slur in the right hand.

The third system of the waltz, showing further development of the melodic and harmonic themes.

The fourth system concludes the waltz with a final melodic flourish in the right hand and a sustained bass line in the left hand.

8

8

*rit. a tempo*

*dolce.*

*rit.*

*a tempo*

First system of a piano score. The right hand features a melodic line with eighth and sixteenth notes, while the left hand provides a harmonic accompaniment with chords and single notes.

Second system of the piano score. The right hand continues the melodic development with some slurs, and the left hand maintains a steady accompaniment.

Third system of the piano score. The right hand has more complex rhythmic patterns, including a triplet, and the left hand accompaniment becomes more active.

Fourth system of the piano score. The right hand features a prominent melodic phrase with a slur, and the left hand accompaniment continues to support the melody.

Fifth system of the piano score, concluding the piece. The right hand ends with a triplet and a final melodic flourish, while the left hand provides a final accompaniment.