

The Call of the Woods

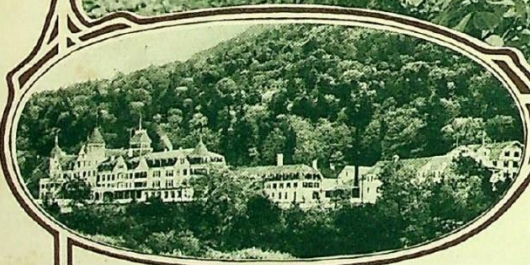
Valse descriptive



MT. WASHINGTON HOTEL, N.H.

by *Wm. H. Tyers*

Composer of *Maori*
and *Admiration*



MT. PLEASANT HOTEL

Dedicated by the composer to

*The Mount Washington and
Mount Pleasant Hotels*

*of the Bretton Woods Company
Bretton Woods, White Mts., N.H.*

G. Ricordi & Co.

G. Ricordi & Co.
MUSIC • NEW YORK • PUBLISHERS
MILAN • ROME • NAPLES • PALERMO
LONDON • PARIS • LEIPSIG • BUENOS-AYRES

116286-10 CELLO & PIANO-50 CTS.

116287-PIANO SOLO-60 CTS.

Dedicated to The Mount Washington and Mount Pleasant Hotels
Of The Bretton Woods Co. Bretton Woods, White Mountains N. H. by The Composer.

The Call Of The Woods.

Valse Descriptive

WM H. TYERS

Composer of
"Maori" and "Admiration"

INTRODUCTION
Moderato

Valse lento

1

Copyright MCMXVI by G. Ricordi & Co. Inc.

All rights of execution, reproduction and transcription are strictly reserved

Scherz.

The first system of the Scherzo consists of two staves. The treble staff begins with a series of chords, some marked with accents, and includes a melodic line with eighth notes. The bass staff provides a harmonic accompaniment with chords and a few moving lines.

The second system continues the musical piece. The treble staff features more complex chordal textures and melodic fragments. The bass staff maintains a steady accompaniment. The instruction "poco rit." is placed at the end of the system.

The third system includes a first ending bracketed with a "1" and a second ending bracketed with a "2". The instruction "a tempo" is written below the treble staff. The music returns to a more regular tempo after the first ending.

Tempo primo

The fourth system begins with the instruction "Tempo primo" and a dynamic marking of "mp" (mezzo-piano). The treble staff features a prominent melodic line with slurs, while the bass staff continues with chords and a few moving lines.

The fifth system continues the "Tempo primo" section. The treble staff has a melodic line with many slurs, and the bass staff provides a consistent accompaniment with chords and some eighth-note patterns.

The sixth system concludes the "Tempo primo" section. It features a melodic line in the treble staff with various ornaments and slurs, and a bass staff accompaniment.

2

mp

This system shows the beginning of a piece. It features a grand staff with a treble and bass clef. The key signature has three flats (B-flat, E-flat, A-flat), and the time signature is 3/4. The music is marked *mp* (mezzo-piano). The right hand plays a complex, rhythmic melody with many sixteenth notes, while the left hand provides a steady accompaniment of chords and single notes.

This system continues the piece. It includes first and second endings. The first ending leads back to an earlier section, and the second ending concludes the piece. The notation is consistent with the previous system, maintaining the 3/4 time signature and three-flat key signature.

Cantabile

cresc. *dim.*

This system is marked *Cantabile* (cantabile). The tempo is slower and more expressive. It features a grand staff with a treble and bass clef. The right hand has a melodic line with long, flowing phrases, while the left hand plays a supporting accompaniment. Dynamic markings include *cresc.* (crescendo) and *dim.* (diminuendo).

This system continues the *Cantabile* section. The right hand's melody is characterized by wide intervals and a sense of spaciousness. The left hand's accompaniment consists of chords and moving lines that support the overall mood of the piece.

cresc.

This system concludes the *Cantabile* section. It includes first and second endings. The first ending leads back to an earlier section, and the second ending concludes the piece. The notation is consistent with the previous systems, maintaining the 3/4 time signature and three-flat key signature.

Tempo primo

mp

p.

p.

Schers.

poco rit.

a tempo

Tempo primo

mp

p.

p.

Più Lento

mp

l.H.

l.H.

Più mosso